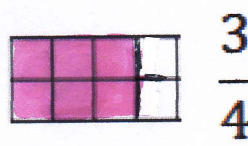
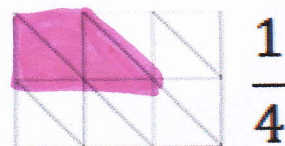
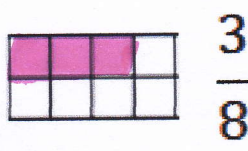
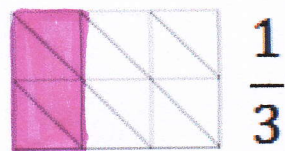
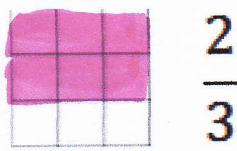
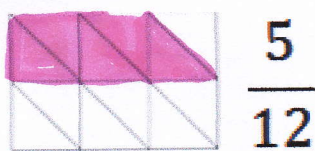


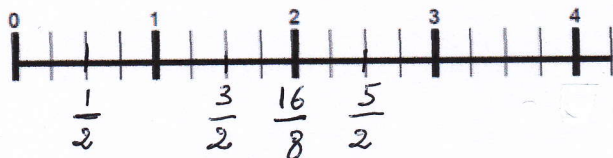
Colorie pour obtenir la fraction indiquée :



Exercice :

Place sur la droite graduée :

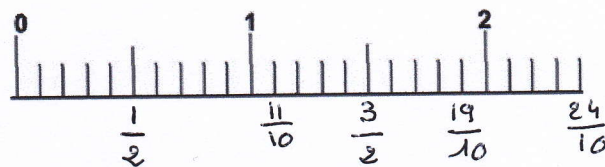
$$\frac{1}{2}, \frac{3}{2}, \frac{5}{2}, \frac{16}{8}$$



Exercice :

Place sur la droite graduée :

$$\frac{1}{2}, \frac{3}{2}, \frac{19}{10}, \frac{24}{10}, \frac{11}{10}$$



Complète avec le signe < ou > :

$$\frac{1}{2} < \frac{3}{2}$$

$$\frac{3}{4} < \frac{5}{4}$$

$$\frac{3}{2} < \frac{7}{2}$$

$$\frac{1}{10} < \frac{4}{10}$$

$$\frac{3}{4} > \frac{2}{4}$$

$$\frac{7}{7} < \frac{8}{7}$$

$$\frac{11}{9} < \frac{13}{9}$$

$$\frac{8}{12} > \frac{6}{12}$$

$$\frac{14}{6} < \frac{17}{6}$$